

**TRINITY**  
COLLEGE LONDON PRESS

# Piano

## Scales & Arpeggios

---

for Trinity College London  
exams from 2015

Initial-Grade 5



The fingering given in this book is offered as a recommendation only. Any other logical system of fingering is acceptable provided that it is consistent and allows an even execution of the requirements.

Please note that the recommended speeds are a guide to what can be expected at each level. For the purposes of fulfilling exam criteria, accuracy, fluency and evenness of touch and tone should be regarded as equally important aspects of technical competence.

Candidates should note that both *legato* and *staccato* versions of **every** scale and arpeggio should be prepared as required by the current syllabus.

Initial .....	3
Grade 1 .....	5
Grade 2 .....	10
Grade 3 .....	14
Grade 4 .....	18
Grade 5 .....	22

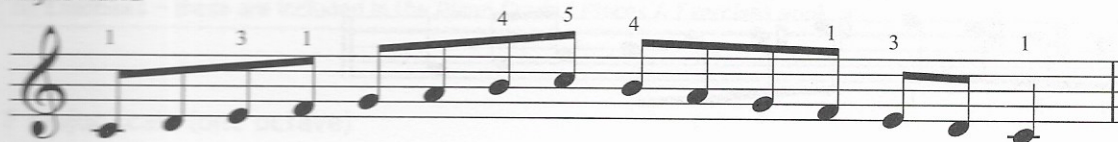
# Initial

Initial continues

Technical work – all sections and options to be prepared					
i) Scales – the examiner will select from the following:					
C major	min. ♩ = 60	<i>mf</i>	legato	one octave	hands separately
A minor (candidate's choice of <i>either</i> harmonic or melodic or natural minor)					
Broken triad in C major and A minor				to 5th	
ii) Exercises – these are included in the <i>Piano Initial Pieces &amp; Exercises</i> book.					

## C major (one octave)

Right hand



Left hand



## C major broken triad (to 5th)

Right hand

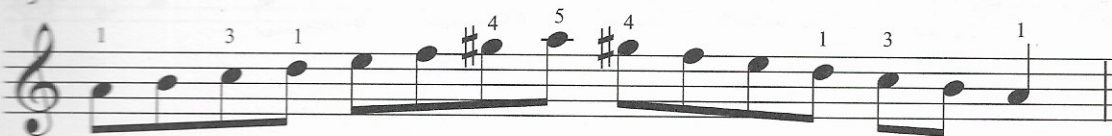


Left hand



## A minor: harmonic (one octave)

Right hand



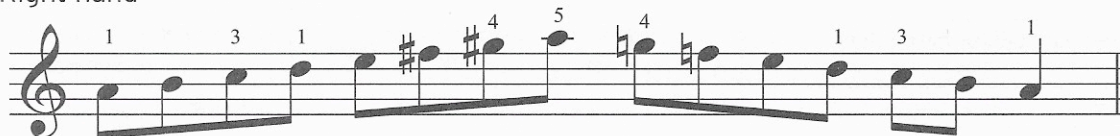
Left hand



## Initial continued

### A minor: melodic (one octave)

Right hand

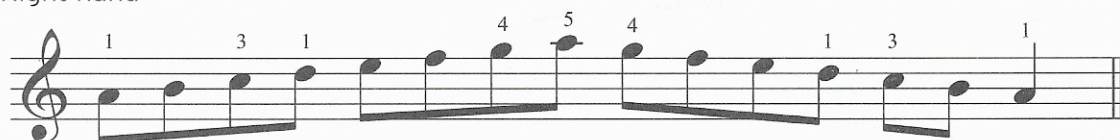


Left hand



### A minor: natural (one octave)

Right hand



Left hand

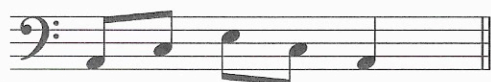


### A minor broken triad (to 5th)

Right hand



Left hand





# Grade 1

## Technical work – all sections and options to be prepared

### i) Scales – the examiner will select from the following:

F and G major	min. ♩ = 70	<i>mf</i>	legato	one octave	hands separately
D and E minor (candidate's choice of <i>either</i> harmonic or melodic or natural minor)					hands together
Chromatic scale in contrary motion starting on D					
C major contrary motion					

### ii) Broken chords – the examiner will select from the following:

F and G major	min. ♩ = 50	<i>mf</i>	legato	one octave	hands separately
D and E minor					

### iii) Exercises – these are included in the *Piano Grade 1 Pieces & Exercises* book.

### F major scale (one octave)

Right hand

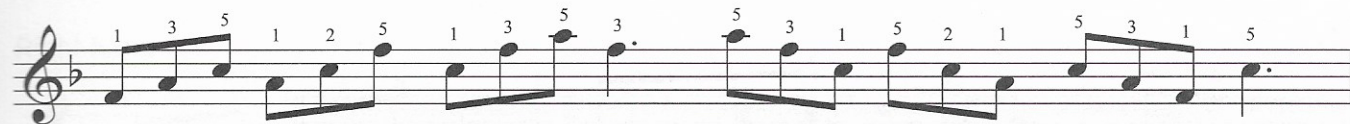


Left hand



### F major broken chord (one octave)

Right hand



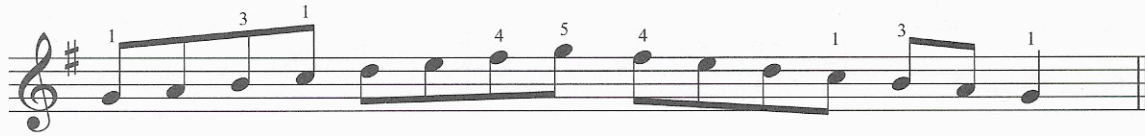
Left hand



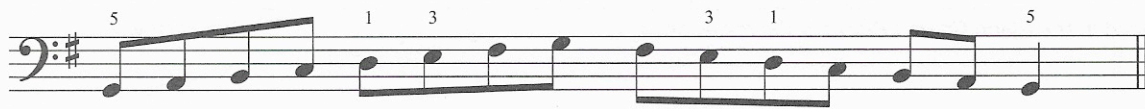
## Grade 1 continued

### G major scale (one octave)

Right hand

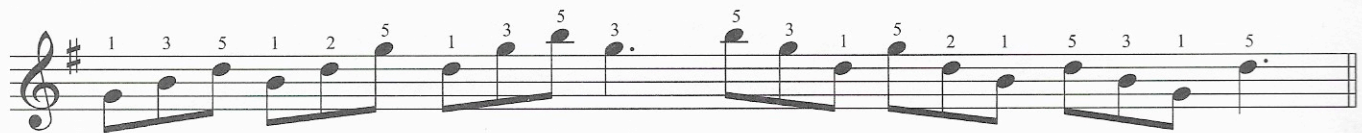


Left hand

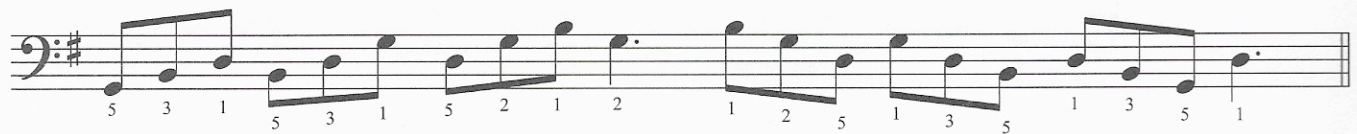


### G major broken chord (one octave)

Right hand



Left hand



### D minor scale: harmonic (one octave)

Right hand



Left hand





D minor scale: melodic (one octave)

Right hand

Musical notation for the right hand of the D minor melodic scale. The scale is written in a single staff with a treble clef and a key signature of one flat (B-flat). The notes are: D4, E4, F4, G4, A4, Bb4, C5, D5, C5, Bb4, A4, G4, F4, E4, D4. Fingerings are indicated by numbers 1-5 above the notes: 1, 3, 1, 4, 5, 4, 1, 3, 1.

Left hand

Musical notation for the left hand of the D minor melodic scale. The scale is written in a single staff with a bass clef and a key signature of one flat (B-flat). The notes are: D3, C3, B2, A2, G2, F2, E2, D2, C2, B1, A1, G1, F1, E1, D1. Fingerings are indicated by numbers 1-5 below the notes: 5, 1, 3, 1, 3, 1, 5.

D minor scale: natural (one octave)

Right hand

Musical notation for the right hand of the D minor natural scale. The scale is written in a single staff with a treble clef and a key signature of one flat (B-flat). The notes are: D4, E4, F4, G4, A4, B4, C5, D5, C5, B4, A4, G4, F4, E4, D4. Fingerings are indicated by numbers 1-5 above the notes: 1, 3, 1, 4, 5, 4, 1, 3, 1.

Left hand

Musical notation for the left hand of the D minor natural scale. The scale is written in a single staff with a bass clef and a key signature of one flat (B-flat). The notes are: D3, C3, B2, A2, G2, F2, E2, D2, C2, B1, A1, G1, F1, E1, D1. Fingerings are indicated by numbers 1-5 below the notes: 5, 1, 3, 1, 3, 1, 5.

D minor broken chord (one octave)

Right hand

Musical notation for the right hand of the D minor broken chord exercise. The scale is written in a single staff with a treble clef and a key signature of one flat (B-flat). The notes are: D4, E4, F4, G4, A4, Bb4, C5, D5, C5, Bb4, A4, G4, F4, E4, D4. Fingerings are indicated by numbers 1-5 above the notes: 1, 3, 5, 1, 2, 5, 1, 3, 5, 3, 5, 3, 1, 5, 2, 1, 5, 3, 1, 5.

Left hand

Musical notation for the left hand of the D minor broken chord exercise. The scale is written in a single staff with a bass clef and a key signature of one flat (B-flat). The notes are: D3, C3, B2, A2, G2, F2, E2, D2, C2, B1, A1, G1, F1, E1, D1. Fingerings are indicated by numbers 1-5 below the notes: 5, 3, 1, 5, 3, 1, 5, 2, 1, 2, 1, 2, 5, 1, 3, 5, 1, 3, 5, 1.

## Grade 1 continued

### E minor scale: harmonic (one octave)

Right hand



Left hand



### E minor scale: melodic (one octave)

Right hand



Left hand



### E minor scale: natural (one octave)

Right hand



Left hand





E minor broken chord (one octave)

Right hand

Musical notation for the right hand of an E minor broken chord exercise. The staff is in treble clef with a key signature of one sharp (F#). The exercise consists of a sequence of eighth notes: E4, G4, B4, A4, G4, F#4, E4, D4, C4, B3, A3, G3, F#3, E3, D3, C3, B2, A2, G2, F#2, E2. Fingerings are indicated above the notes: 1, 3, 5, 1, 2, 5, 1, 3, 5, 3, 5, 3, 1, 5, 2, 1, 5, 3, 1, 5.

Left hand

Musical notation for the left hand of an E minor broken chord exercise. The staff is in bass clef with a key signature of one sharp (F#). The exercise consists of a sequence of eighth notes: E3, G3, B3, A3, G3, F#3, E3, D3, C3, B2, A2, G2, F#2, E2, D2, C2, B1, A1, G1, F#1, E1. Fingerings are indicated below the notes: 5, 3, 1, 5, 3, 1, 5, 2, 1, 2, 1, 2, 5, 1, 3, 5, 1, 3, 5, 1.

C major contrary motion scale (one octave)

Musical notation for a C major contrary motion scale exercise. The staff is in treble clef with a key signature of no sharps or flats. The exercise consists of two staves. The right hand plays an ascending scale: C4, D4, E4, F4, G4, A4, B4, C5. The left hand plays a descending scale: C5, B4, A4, G4, F4, E4, D4, C4. Fingerings are indicated above and below the notes: 1, 3, 1, 4, 5, 4, 1, 3, 1, 3, 1, 4, 5, 4, 1, 3.

Chromatic scale in contrary motion hands together, starting on D (one octave)

Musical notation for a chromatic scale in contrary motion hands together exercise, starting on D. The staff is in treble clef with a key signature of no sharps or flats. The exercise consists of two staves. The right hand plays an ascending chromatic scale: D4, D#4, E4, E#4, F4, F#4, G4, G#4, A4, A#4, B4, B#4, C5. The left hand plays a descending chromatic scale: C5, B#4, B4, A#4, A4, G#4, G4, F#4, F4, E#4, E4, D#4, D4. Fingerings are indicated above and below the notes: 1, 3, 1, 2, 3, 1, 1, 2, 1, 3, 2, 1, 3, 1, 2, 1, 1, 3, 1, 2, 1, 2, 1, 3, 1, 2, 1.

# Grade 2

## Technical work – all sections and options to be prepared

### i) Scales – the examiner will select from the following:

B♭ and D major	min. ♩ = 80	<i>f</i> or <i>p</i>	legato	two octaves	hands together
G and B minor (candidate's choice of <i>either</i> harmonic or melodic minor)					
Chromatic scale in similar motion starting on B♭					
C major contrary motion					

### ii) Arpeggios – the examiner will select from the following:

B♭ and D major	min. ♩ = 60	<i>mf</i>	legato	two octaves	hands separately
G and B minor					

### iii) Exercises – these are included in the *Piano Grade 2 Pieces & Exercises* book.

#### B♭ major scale (two octaves)

Musical notation for the B♭ major scale (two octaves). The treble clef starts on B♭ and the bass clef starts on B♭. Fingerings are indicated by numbers 1-4 above or below notes.

#### B♭ major arpeggio (two octaves)

##### Right hand

Musical notation for the right hand of the B♭ major arpeggio (two octaves) in treble clef. Fingerings are indicated by numbers 1-4 above notes.

##### Left hand

Musical notation for the left hand of the B♭ major arpeggio (two octaves) in bass clef. Fingerings are indicated by numbers 1-4 below notes.



D major scale (two octaves)

Musical notation for the D major scale (two octaves) in treble and bass clefs. The key signature has two sharps (F# and C#). The right hand starts on D4 and the left hand starts on D3. Fingerings are indicated by numbers 1-5 above or below notes. The scale is played in a continuous, flowing manner across two octaves in each hand.

D major arpeggio (two octaves)

Right hand

Musical notation for the D major arpeggio (two octaves) in the right hand. The key signature has two sharps (F# and C#). The arpeggio starts on D4 and moves up to D6, then down to D5. Fingerings are indicated by numbers 1-5 above notes.

Left hand

Musical notation for the D major arpeggio (two octaves) in the left hand. The key signature has two sharps (F# and C#). The arpeggio starts on D3 and moves up to D5, then down to D4. Fingerings are indicated by numbers 1-5 below notes.

G minor scale: harmonic (two octaves)

Musical notation for the G minor scale: harmonic (two octaves) in treble and bass clefs. The key signature has two flats (Bb and Eb). The right hand starts on G4 and the left hand starts on G3. Fingerings are indicated by numbers 1-5 above or below notes. The scale is played in a continuous, flowing manner across two octaves in each hand.

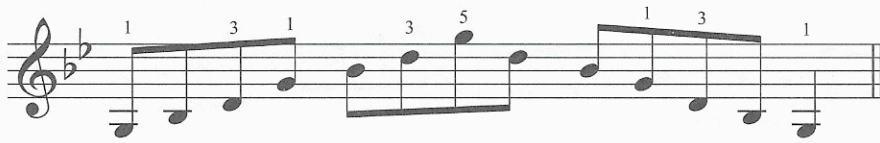
G minor scale: melodic (two octaves)

Musical notation for the G minor scale: melodic (two octaves) in treble and bass clefs. The key signature has two flats (Bb and Eb). The right hand starts on G4 and the left hand starts on G3. Fingerings are indicated by numbers 1-5 above or below notes. The scale is played in a continuous, flowing manner across two octaves in each hand.

## Grade 2 continued

### G minor arpeggio (two octaves)

Right hand



Left hand



### B minor scale: harmonic (two octaves)

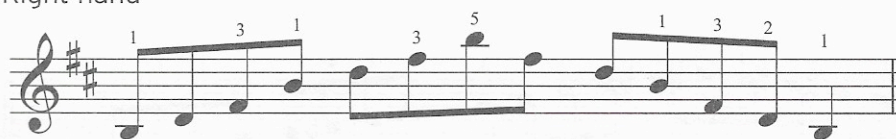


### B minor scale: melodic (two octaves)



### B minor arpeggio (two octaves)

Right hand



Left hand





C major contrary motion scale (two octaves)

Musical notation for a C major contrary motion scale spanning two octaves. The scale is written in treble and bass clefs. The treble clef part starts on C4 and ends on C6, while the bass clef part starts on C2 and ends on C4. Fingerings are indicated by numbers 1-5 above or below the notes.

Chromatic scale in similar motion starting on B $\flat$  (two octaves)

Musical notation for a chromatic scale in similar motion starting on B $\flat$ , spanning two octaves. The scale is written in treble and bass clefs. The treble clef part starts on B $\flat$ 4 and ends on B $\flat$ 6, while the bass clef part starts on B $\flat$ 2 and ends on B $\flat$ 4. Fingerings are indicated by numbers 1-3 above or below the notes.

# Grade 3

## Technical work – all sections and options to be prepared

### i) Scales – the examiner will select from the following:

E♭ and A major	min. ♩ = 90	<i>f</i> or <i>p</i>	legato	two octaves	hands together
C and F# minor (candidate's choice of <i>either</i> harmonic or melodic minor)					
E♭ major contrary motion scale					
Chromatic scale in similar motion starting on F#					

### ii) Arpeggios – the examiner will select from the following:

E♭ and A major	min. ♩ = 70	<i>mf</i>	legato	two octaves	hands separately
C and F# minor					

### iii) Exercises – these are included in the *Piano Grade 3 Pieces & Exercises* book.

#### E♭ major scale (two octaves)

Musical notation for the E♭ major scale (two octaves) in treble and bass clefs. The key signature has two flats (B♭ and E♭). Fingerings are indicated by numbers 1-4 above or below notes. The right hand starts on G4 and the left hand starts on G2.

#### E♭ major arpeggio (two octaves)

Right hand

Musical notation for the E♭ major arpeggio (two octaves) in the right hand, treble clef. The key signature has two flats. Fingerings are indicated by numbers 1-4 above notes.

Left hand

Musical notation for the E♭ major arpeggio (two octaves) in the left hand, bass clef. The key signature has two flats. Fingerings are indicated by numbers 1-4 below notes.

#### A major scale (two octaves)

Musical notation for the A major scale (two octaves) in treble and bass clefs. The key signature has three sharps (F#, C#, G#). Fingerings are indicated by numbers 1-5 above or below notes. The right hand starts on A4 and the left hand starts on A2.



A major arpeggio (two octaves)

Right hand

Left hand

C minor scale: harmonic (two octaves)

C minor scale: melodic (two octaves)

C minor arpeggio (two octaves)

Right hand

Left hand

## Grade 3 continued

### F# minor scale: harmonic (two octaves)

### F# minor scale: melodic (two octaves)

### F# minor arpeggio (two octaves)

Right hand

Left hand

### E♭ major contrary motion scale (two octaves)



Chromatic scale: starting on F#, hands together in similar motion (two octaves)

The image shows a musical score for a chromatic scale exercise. It consists of two systems of two staves each (treble and bass clef). The key signature is one sharp (F#). The exercise is performed with both hands together in similar motion, covering two octaves. The first system shows the right hand starting on F# and moving up, and the left hand starting on F# and moving down. The second system shows the right hand starting on F# and moving down, and the left hand starting on F# and moving up. Fingerings are indicated by numbers 1, 2, and 3 above or below the notes. The piece concludes with a double bar line.

# Grade 4

## Technical work – all sections and options to be prepared

### i) Scales – the examiner will select from the following:

A $\flat$ and E major	min. ♩ = 100	<i>f</i> or <i>p</i>	legato or staccato	two octaves	hands together
F and C $\sharp$ minor (candidate's choice of <i>either</i> harmonic or melodic minor)					
E major contrary motion scale			legato only	one octave	
Chromatic scale in similar motion starting on B					
Chromatic scale in contrary motion starting on A $\flat$					

### ii) Arpeggios – the examiner will select from the following:

A $\flat$ and E major	min. ♩ = 80	<i>f</i> or <i>p</i>	legato	two octaves	hands separately
F and C $\sharp$ minor					

### iii) Exercises – these are included in the *Piano Grade 4 Pieces & Exercises* book.

#### A $\flat$ major scale (two octaves)

#### A $\flat$ major arpeggio (two octaves)

Right hand

Left hand

#### E major scale (two octaves)



E major arpeggio (two octaves)

Right hand

Musical notation for the right hand of an E major arpeggio spanning two octaves. The key signature has three sharps (F#, C#, G#). The melody starts on E4 and ascends to E6, then descends back to E4. Fingerings are indicated above the notes: 1, 3, 1, 3, 5, 1, 3, 1.

Left hand

Musical notation for the left hand of an E major arpeggio spanning two octaves. The melody starts on E2 and ascends to E4, then descends back to E2. Fingerings are indicated below the notes: 5, 4, 2, 1, 4, 1, 4, 1, 4, 5.

F minor scale: harmonic (two octaves)

Musical notation for the F minor scale in harmonic form spanning two octaves. The key signature has three flats (Bb, Eb, Ab). The right hand plays a melodic line with fingerings 1, 4, 1, 3, 1, 4, 1, 4, 1, 3, 1, 4, 1. The left hand plays a harmonic accompaniment with fingerings 5, 1, 3, 1, 4, 1, 3, 1, 3, 1, 4, 1, 3, 1, 5.

F minor scale: melodic (two octaves)

Musical notation for the F minor scale in melodic form spanning two octaves. The key signature has three flats (Bb, Eb, Ab). The right hand plays a melodic line with fingerings 1, 4, 1, 3, 1, 4, 1, 4, 1, 3, 1, 4, 1. The left hand plays a harmonic accompaniment with fingerings 5, 1, 3, 1, 4, 1, 3, 1, 3, 1, 4, 1, 3, 1, 5.

F minor arpeggio (two octaves)

Right hand

Musical notation for the right hand of an F minor arpeggio spanning two octaves. The key signature has three flats (Bb, Eb, Ab). The melody starts on F4 and ascends to F6, then descends back to F4. Fingerings are indicated above the notes: 1, 3, 1, 3, 5, 1, 3, 1.

Left hand

Musical notation for the left hand of an F minor arpeggio spanning two octaves. The melody starts on F2 and ascends to F4, then descends back to F2. Fingerings are indicated below the notes: 5, 4, 2, 1, 4, 1, 4, 1, 4, 5.

## Grade 4 continued

### C# minor scale: harmonic (two octaves)

2 3 1 3 1 4 1 3 1 3 1 4 1 3 1 3 2

3 1 4 1 3 1 4 1 2 1 4 1 3 1 4 1 3

### C# minor scale: melodic (two octaves)

2 3 1 3 4 1 3 1 3 1 3 1 4 1 3 1 3 2

3 1 4 1 3 1 4 1 2 1 4 1 3 1 4 1 3

### C# minor arpeggio (two octaves)

#### Right hand

2 1 2 4 1 4 1 2

#### Left hand

2 1 4 2 1 4 2 1 4 1 2

### E major scale: contrary motion (two octaves)

1 3 1 4 1 3 1 4 5 4 1 3 1 4 1 3

1 3 1 4 1 3 1 4 5 4 1 3 1 4 1 3



Chromatic scale in similar motion starting on B (two octaves):

Musical notation for a chromatic scale in similar motion starting on B (two octaves). The piece is written for piano in two systems. The first system consists of a treble clef staff and a bass clef staff. The treble staff begins with a treble clef and contains two octaves of an ascending chromatic scale starting on B4, with fingerings 1 2 3 1 3 1 2 3 1 3 1 3 above the notes. The bass staff begins with a bass clef and contains two octaves of a descending chromatic scale starting on B4, with fingerings 4 3 2 1 3 2 1 3 1 3 1 3 below the notes. The second system also consists of a treble clef staff and a bass clef staff. The treble staff continues the ascending chromatic scale with fingerings 1 3 1 3 1 3 2 1 above the notes. The bass staff continues the descending chromatic scale with fingerings 1 3 1 3 1 3 2 1 below the notes. The piece concludes with a double bar line.

Chromatic scale in contrary motion starting on A $\flat$  (one octave):

Musical notation for a chromatic scale in contrary motion starting on A $\flat$  (one octave). The piece is written for piano in two systems. The first system consists of a treble clef staff and a bass clef staff. The treble staff begins with a treble clef and contains one octave of a descending chromatic scale starting on A $\flat$ 4, with fingerings 2 1 3 1 2 3 1 3 1 2 3 1 3 1 3 2 1 3 1 3 above the notes. The bass staff begins with a bass clef and contains one octave of an ascending chromatic scale starting on A $\flat$ 4, with fingerings 2 1 3 1 2 3 1 2 3 1 3 2 1 3 2 1 3 1 2 below the notes. The piece concludes with a double bar line.

# Grade 5

## Technical work – all sections and options to be prepared

### i) Scales – the examiner will select from the following:

D $\flat$ and B major	min. ♩ = 110	<i>f</i> or <i>p</i>	legato or staccato	two octaves	hands together
B $\flat$ and G $\sharp$ minor (candidate's choice of <i>either</i> harmonic or melodic minor)					
G harmonic minor contrary motion scale			legato only		
Chromatic scale in similar motion starting on D $\flat$					
Chromatic scale in contrary motion, left hand starting on C and right hand starting on E					

### ii) Arpeggios (in similar motion) – the examiner will select from the following:

D $\flat$ and B major	min. ♩ = 90	<i>f</i> or <i>p</i>	legato or staccato	two octaves	hands together
B $\flat$ and G $\sharp$ minor					
Diminished 7th starting on B					

### iii) Exercises – these are included in the *Piano Grade 5 Pieces & Exercises* book.

#### D $\flat$ major scale

Musical notation for the D $\flat$  major scale, showing both ascending and descending lines with fingering numbers.

#### D $\flat$ major arpeggio (two octaves)

Musical notation for the D $\flat$  major arpeggio, showing two octaves of ascending and descending chords with fingering numbers.

#### B major scale (two octaves)

Musical notation for the B major scale, showing two octaves of ascending and descending lines with fingering numbers.



B major arpeggio (two octaves)

B $\flat$  minor scale: harmonic (two octaves)

B $\flat$  minor scale: melodic (two octaves)

B $\flat$  minor arpeggio (two octaves)

G $\sharp$  minor scale: harmonic (two octaves)

# Grade 5 continued

## G# minor scale: melodic (two octaves)

Musical notation for the G# minor scale, melodic, two octaves. The piece is written in G# minor (three sharps: F#, C#, G#) and 2/4 time. It consists of two staves: a treble clef staff and a bass clef staff. The melody in the treble staff starts on G#4 and ends on G#2. The bass line in the bass staff starts on G#2 and ends on G#4. Fingerings are indicated by numbers 1-5. There are some 'x' marks above certain notes, likely indicating a specific fingering or articulation.

## G# minor arpeggio (two octaves)

Musical notation for the G# minor arpeggio, two octaves. The piece is written in G# minor (three sharps: F#, C#, G#) and 2/4 time. It consists of two staves: a treble clef staff and a bass clef staff. The arpeggio is played in two octaves, starting on G#4 in the treble and G#2 in the bass. Fingerings are indicated by numbers 1-5.

## G minor scale: harmonic, contrary motion (two octaves)

Musical notation for the G minor scale, harmonic, contrary motion, two octaves. The piece is written in G minor (two flats: F, C) and 2/4 time. It consists of two staves: a treble clef staff and a bass clef staff. The melody in the treble staff starts on G4 and ends on G2. The bass line in the bass staff starts on G2 and ends on G4. Fingerings are indicated by numbers 1-5.

## Diminished 7th starting on B (two octaves)

Musical notation for the Diminished 7th starting on B, two octaves. The piece is written in G minor (two flats: F, C) and 2/4 time. It consists of two staves: a treble clef staff and a bass clef staff. The diminished 7th chord is played in two octaves, starting on B4 in the treble and B2 in the bass. Fingerings are indicated by numbers 1-5.



